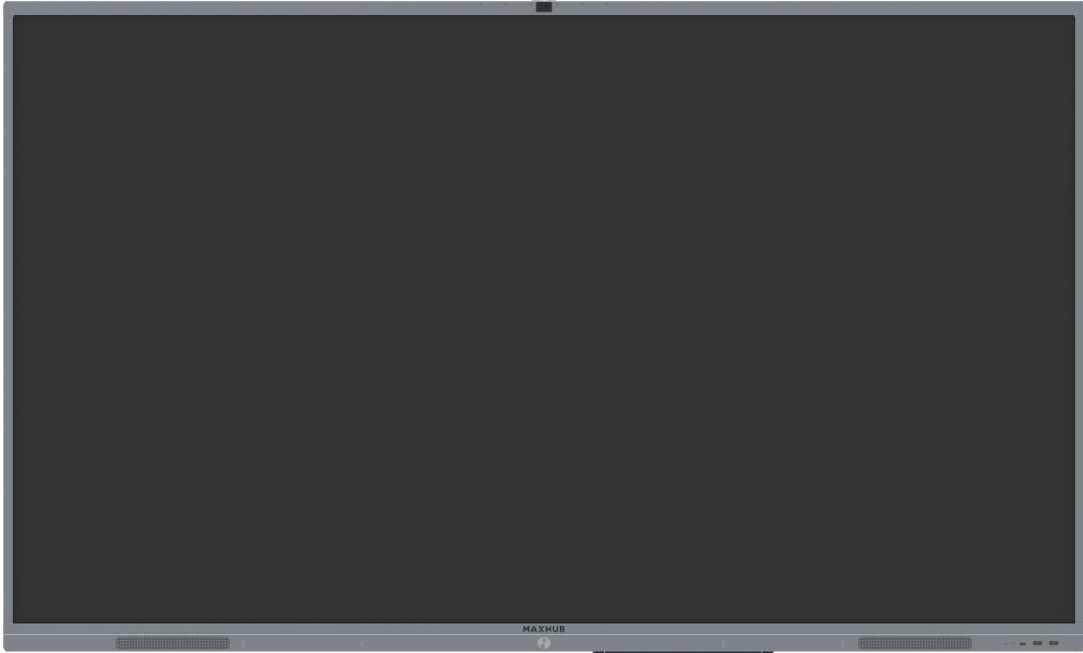


C75CA-BO9D72D-M



Service Manual V1.0

Document Revision History

Version	Modification Date	Page NO.	Updated Instructions	Reviser	Confirmed by
1.0	9/19/2020	All	Release Version	Hooke Lin	Yiqingduo

CONTENT

Safety Instructions.....	4
I. Safety warning.....	4
II. Notice.....	5
Product Basic Specifications.....	6
I. Product Appearance.....	6
Electrical Diagram.....	9
Disassembly guide.....	10
I. Exploded Views.....	10
II. Shell Disassemble.....	11
III. Circuit Boards Disassemble.....	11
IV. Touch Frame Disassembly.....	16
Internal Cables.....	18
I. Cable Connection Guide.....	18
II. Cable Connection Diagram.....	19
Key Parts List (For reference only).....	22
Principle of Key Components.....	23
I. Three-in one Main Board (TP.T972.360W).....	23
II. Wifi Board (SRV.AP_WiFi_IoT.01).....	26
III. Touch Frame(X75G06).....	27
Troubleshoot steps.....	29
I. LED does not turn red.....	29
II. LED does not turn blue.....	30
III. Touch issue.....	31
IV. PC issue.....	32
V. LED turn blue but no backlight.....	33
Firmware update procedure.....	34
I. Upgrade All (TV & MCU).....	34
II. Touch frame Update.....	35

Safety Instructions

Please read the safety information carefully before installing, maintaining, or disassembling this product.

I. Safety warning

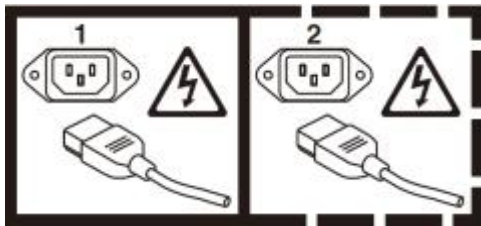
The current of power supply, telephone and communication cable is dangerous and the on/off button, power switch on the device do not cut off the current completely. To avoid the danger of electric shock:

- Be aware that the device may have several power supply cables at the same time. To cut off the power, make sure all power supply cables are disconnected.
- Do not connect or disconnect any cables, install, maintain, or reset the product during thunderstorm.
- Connect all power cables to the right and use the well grounding power supply socket.
- Connect all devices to the proper connector.
- Connect or disconnect cables with one hand is recommended.
- Do not turn on any device when there is a fire, flood, or collapse of a house.
- Please disconnect the power cable, remote communication system, network, modem, and other devices before opening the screen, unless otherwise specified in the installation and configuration process.
- When the product is installed, moved or opened, the step of cable connection or disconnection is provided as below.

<p>To connect cables :</p> <ol style="list-style-type: none">1. Turn off all devices.2. Connect power cords to devices.3. Connect signal/ communication cables to devices.4. Connect the power cord to power supply socket.5. Turn on devices.	<p>To disconnect cables :</p> <ol style="list-style-type: none">1. Turn off all devices.2. Unplug power cords from the socket.3. Disconnect signal /communication cables from connector.4. Disconnect the power cords from devices
--	---

II. Notice

1. When replacing the system battery, please use the same kind of battery.
2. Battery containing lithium, improper operation or handling will cause explode. Please DO NOT:
 - Put the battery into water
 - Heat the battery to more than 100 degrees C (212 degrees F)
 - Repair or disassemble the battery without authorization
3. The AC switch or button mightn't cut off the AC power supply, Please disconnect the AC cable if you need.
4. Do not remove any cover of the module with the danger label attached.



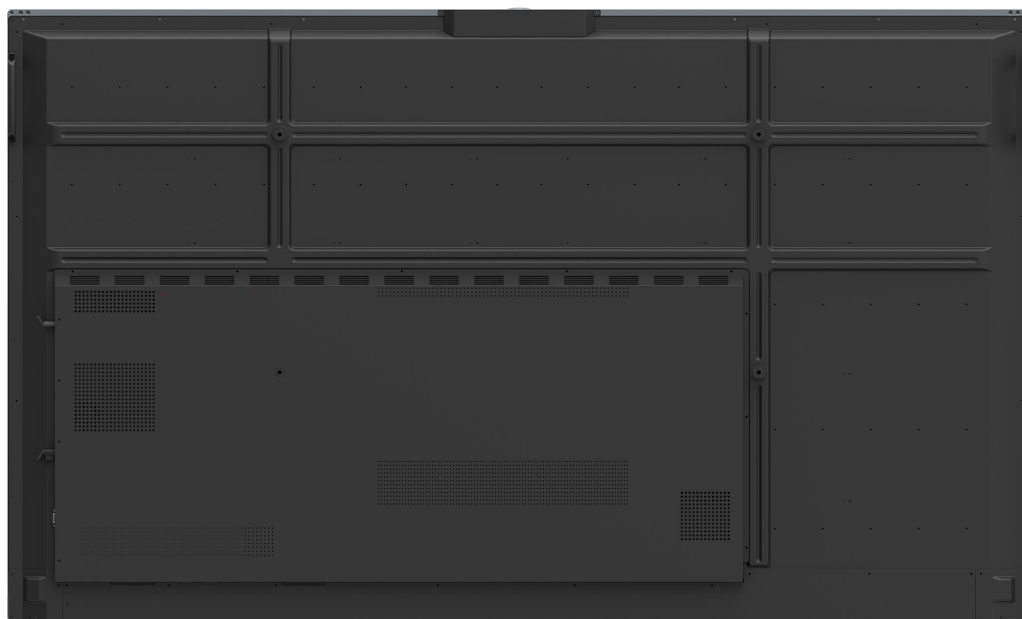
Product Basic Specifications

I. Product Appearance

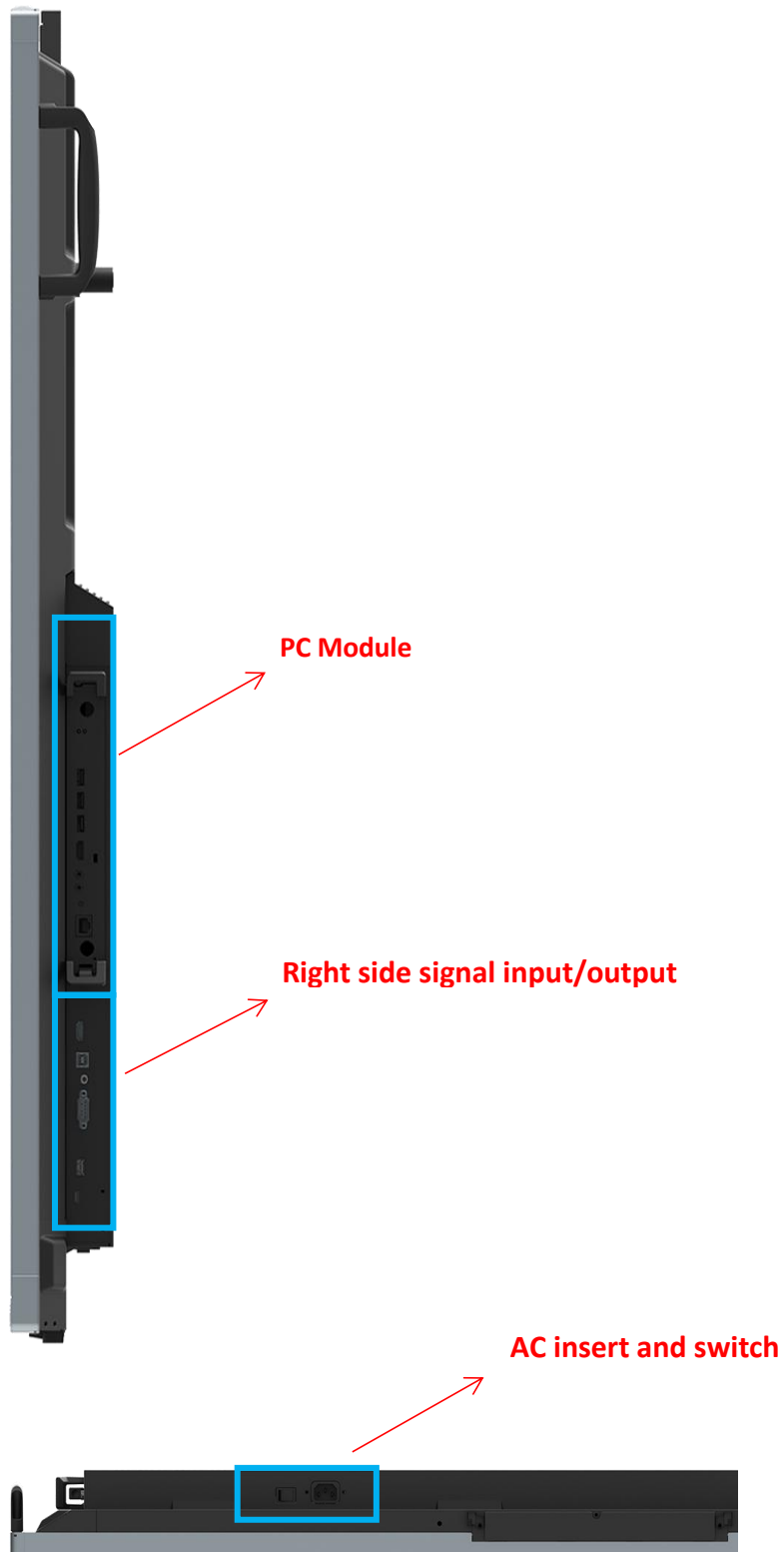
➤ Front view



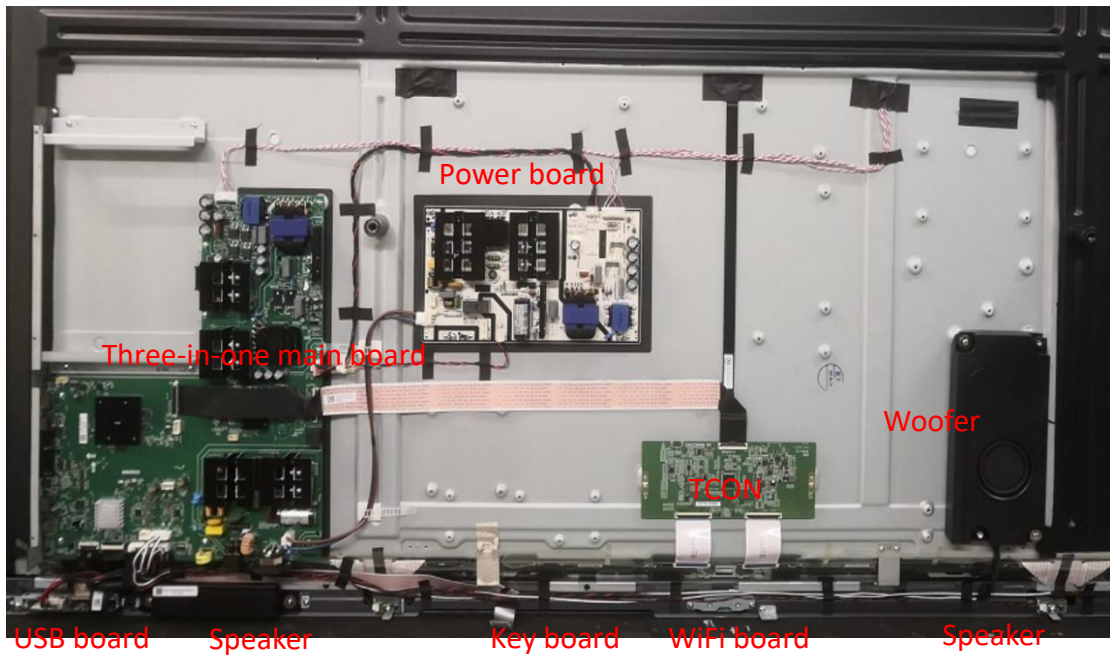
➤ Back view



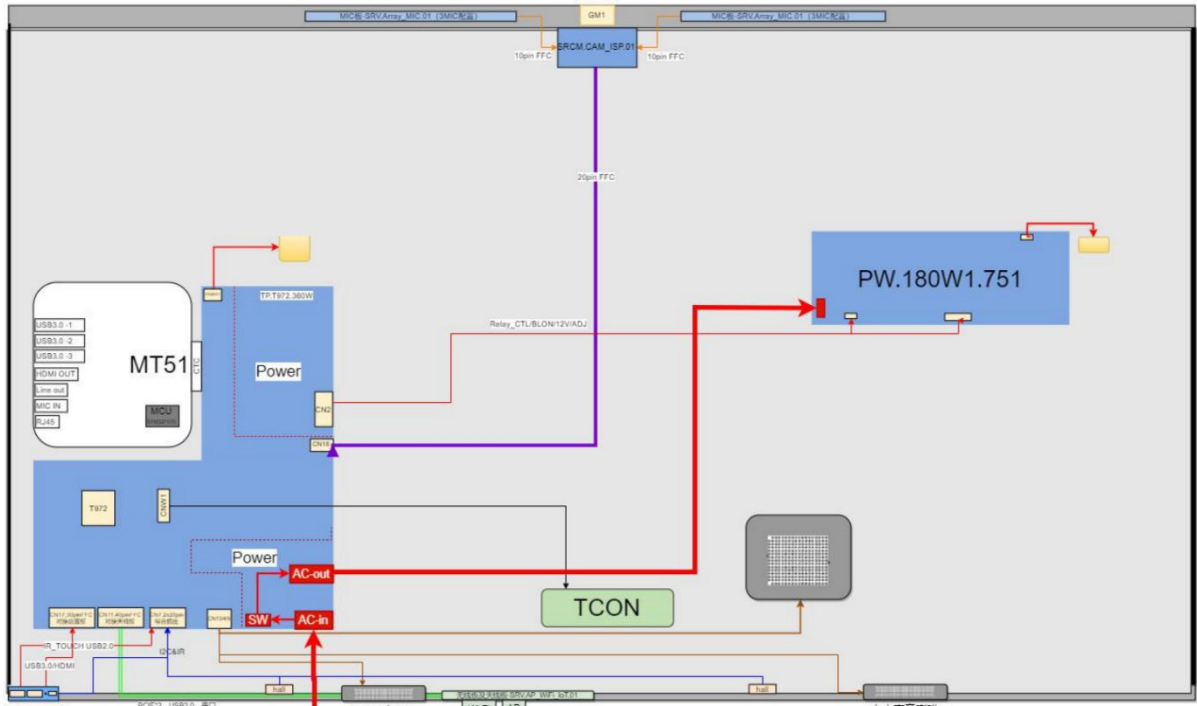
➤ Side view



➤ Back view of the screen

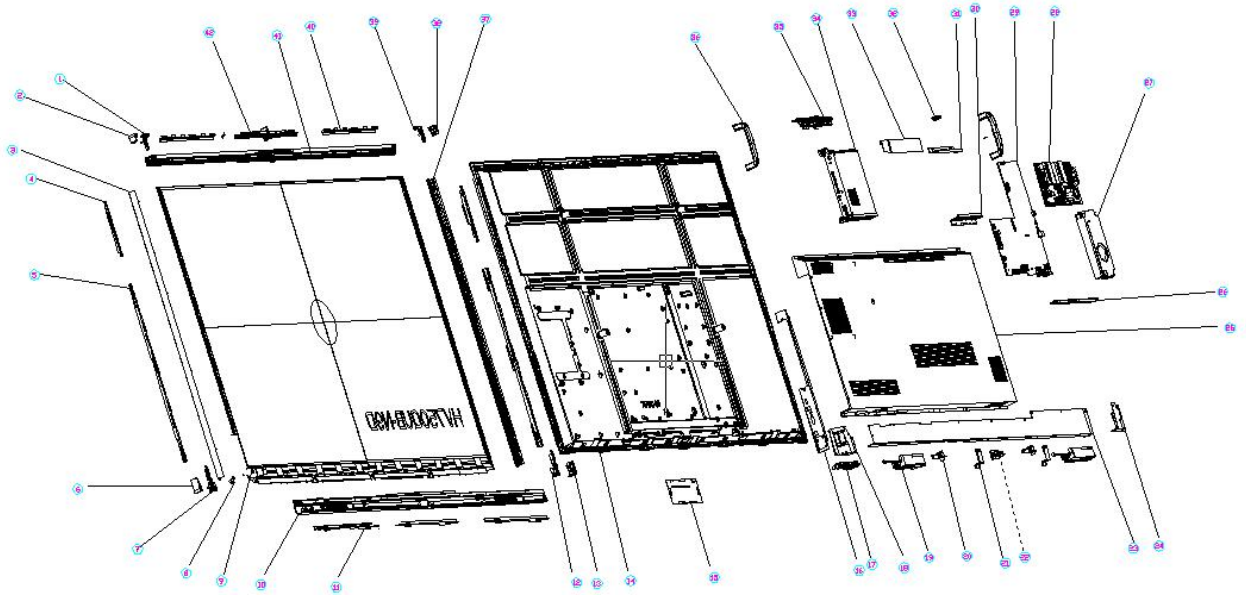


Electrical Diagram



Disassembly guide

I. Exploded Views

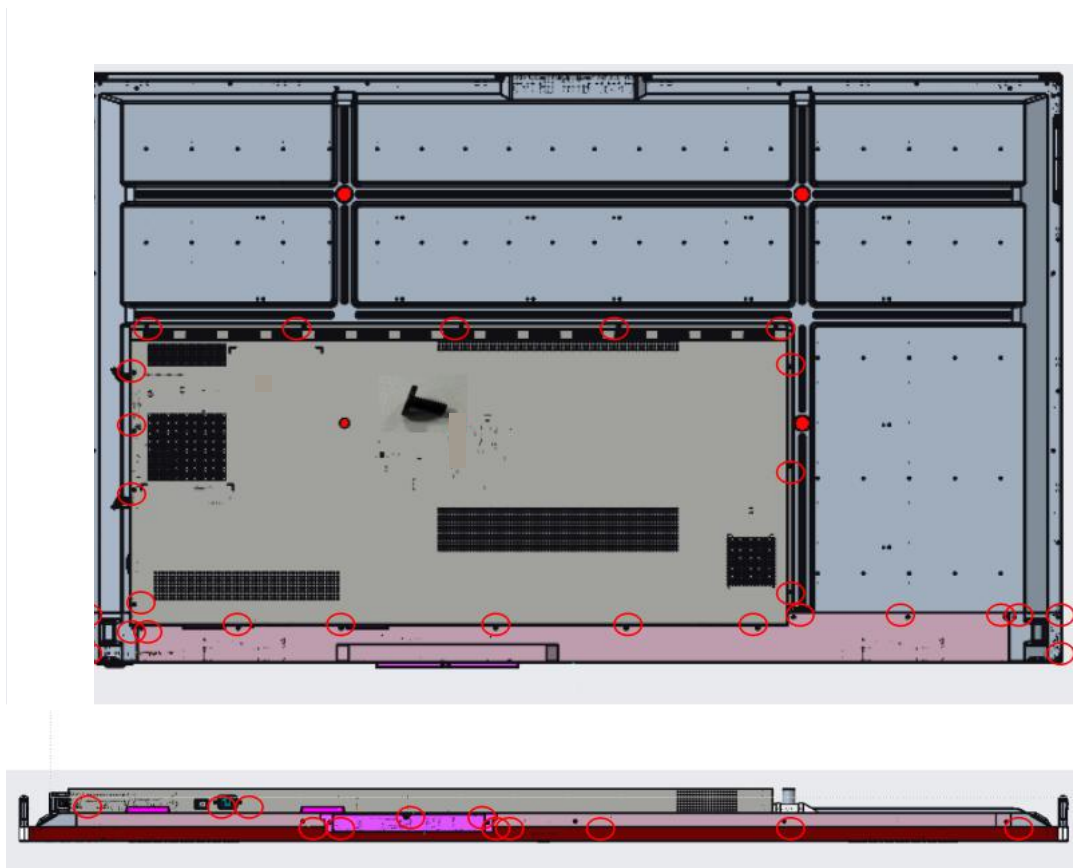


NO.	NAME	QTY	NO.	NAME	QTY
1	Left inside upper corner	1	22	Key board	1
2	Left external upper corner	1	23	Small back cover(Middle)	1
3	Left bezel	1	24	Small back cover(Right)	1
4	Handle bracket	2	25	Big cover	1
5	AG Glass bracket(Left,Right)	2	26	WiFi board	1
6	Left external bottom corner	1	27	Woofer	1
7	Left inside bottom corner	1	28	Power board	1
8	Source clip	1	29	Three-in-one main board	1
9	AG Glass	1	30	PC module bracket(bottom)	1
10	Bottom bezel	1	31	PC module bracket(upper)	1
11	AG Glass bracket(Bottom)	3	32	Camera cover	1
12	Right inside bottom corner	1	33	Camera & MIC cover	1
13	Right external bottom corner	1	34	PC module	1
14	Backlight	1	35	Camera & MIC board	1
15	TCON	1	36	Handle	1
16	Side terminal bracket	1	37	Right bezel	1
17	USB board	1	38	Right external upper corner	1

NO.	NAME	QTY	NO.	NAME	QTY
18	Small back cover(Left)	1	39	Right inside upper corner	2
19	Speaker	2	40	AG Glass bracket(Upper,Middle)	2
20	Hall device	2	41	Upper bezel	1
21	Panel pressing block	1	42	AG Glass bracket(Upper,Middle)	1

II. Shell Disassemble

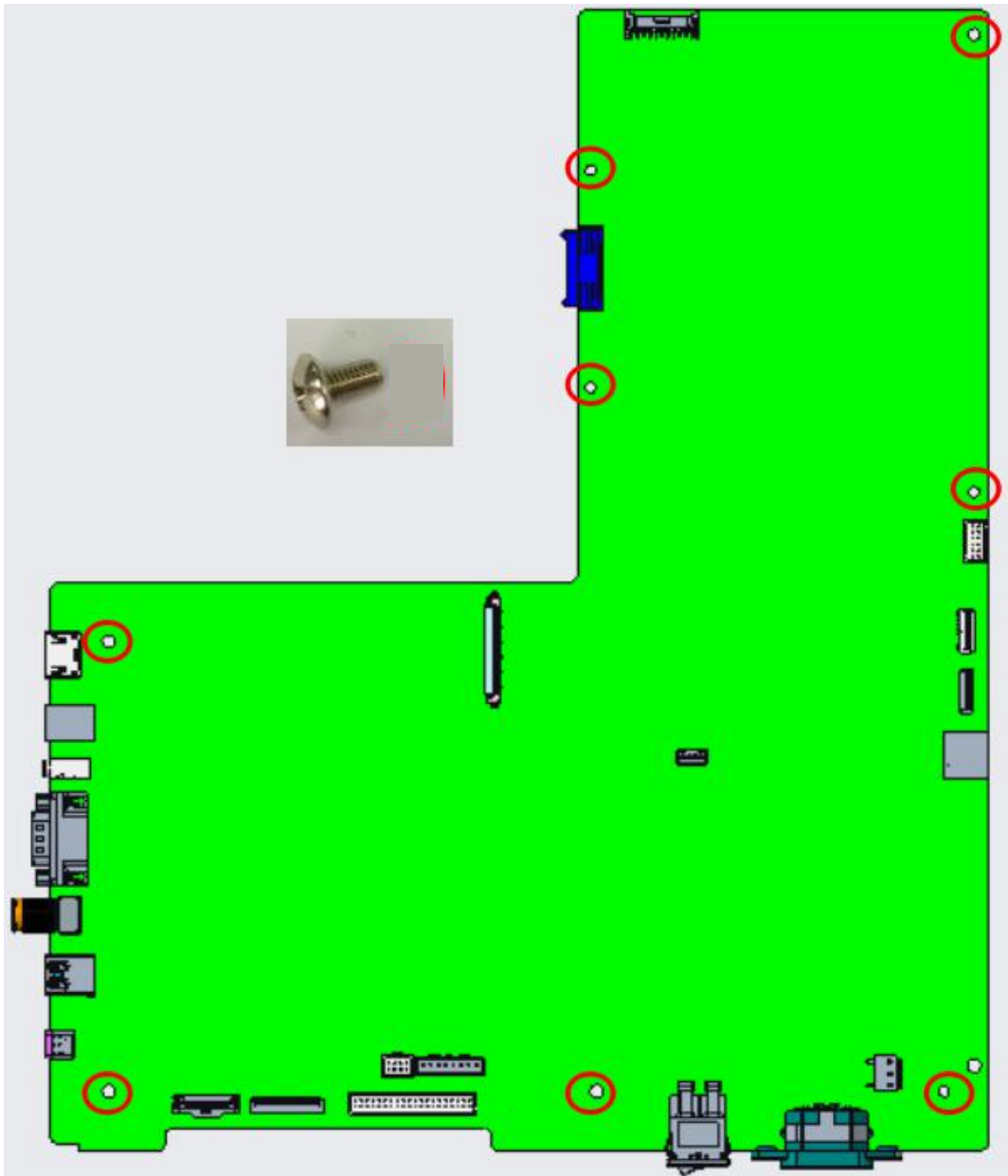
1. Screw Location



III. Circuit Boards Disassemble

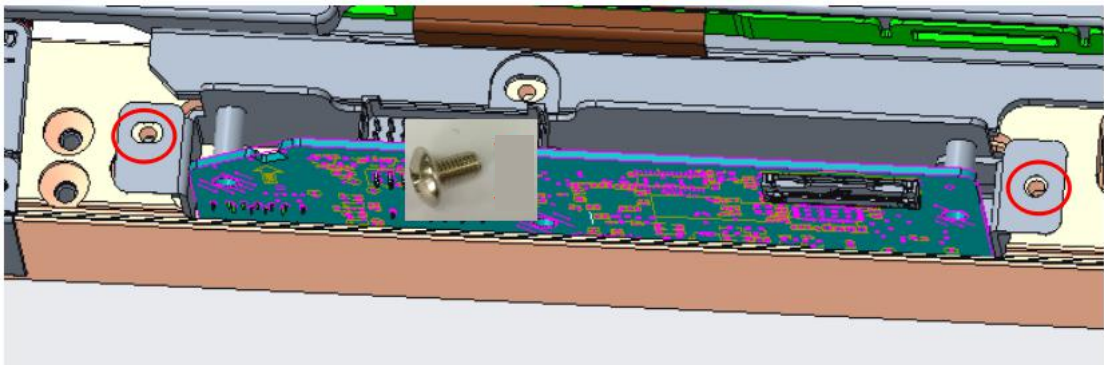
1. Screw Location

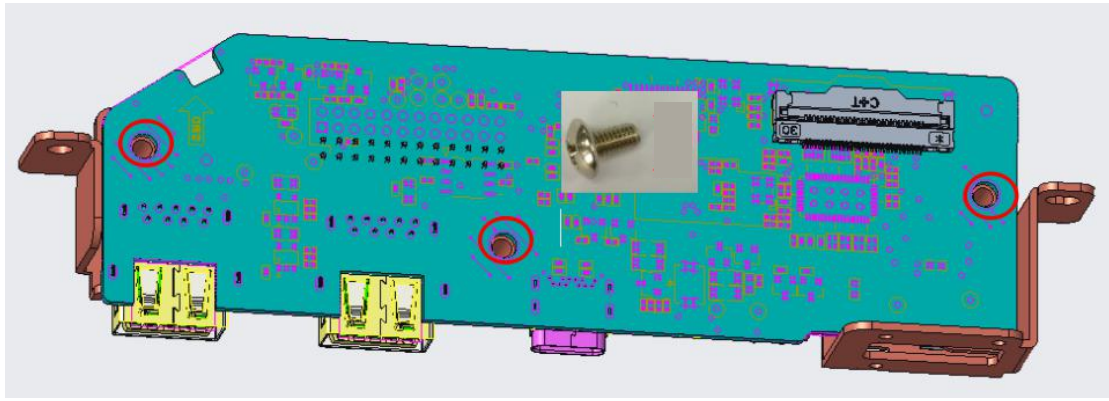
- ◆ Three-in-one Main Board



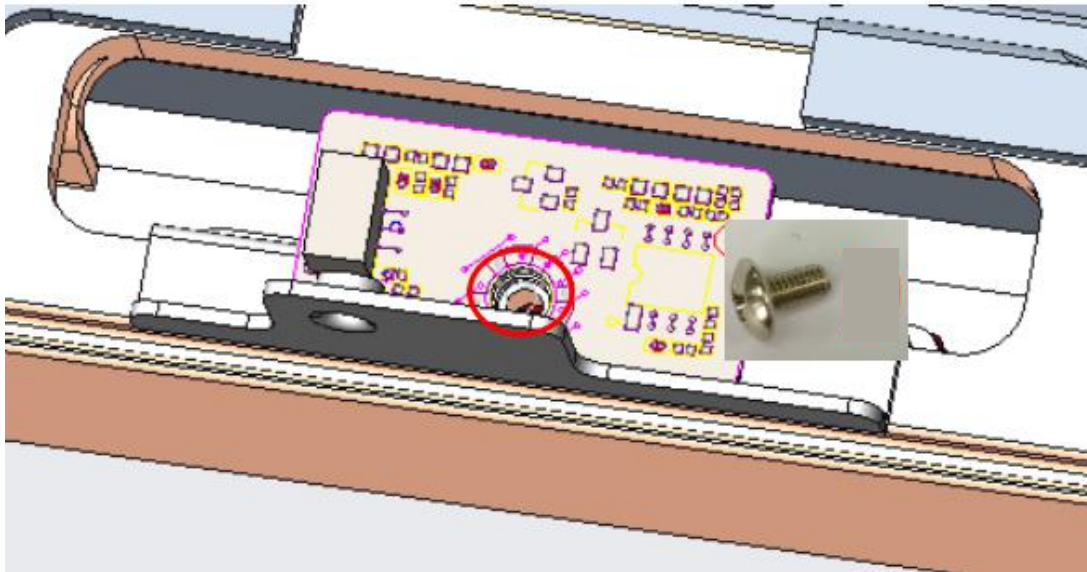
◆ **USB Board**

- (1) Take off the screws of USB board bracket
- (2) Take out the plastic components and USB board

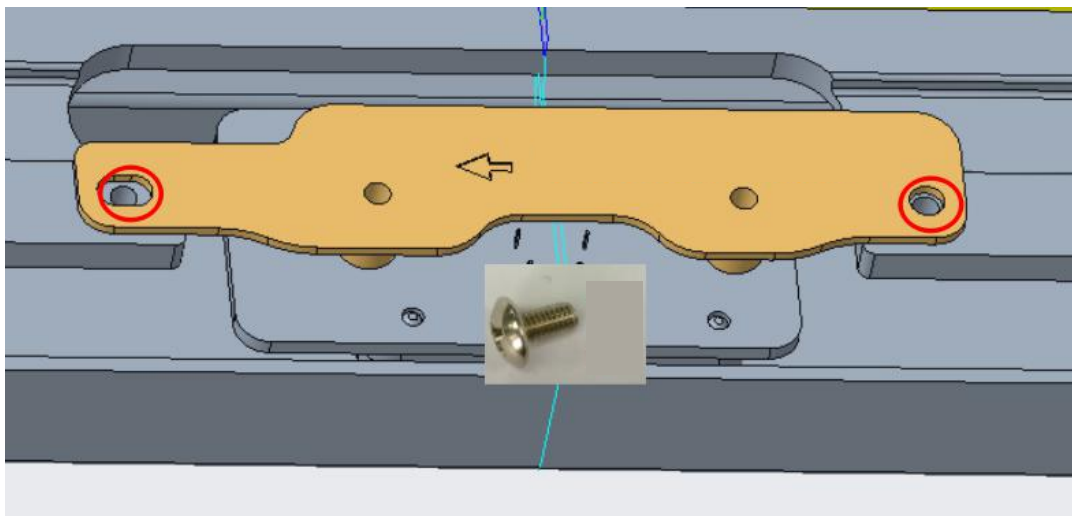


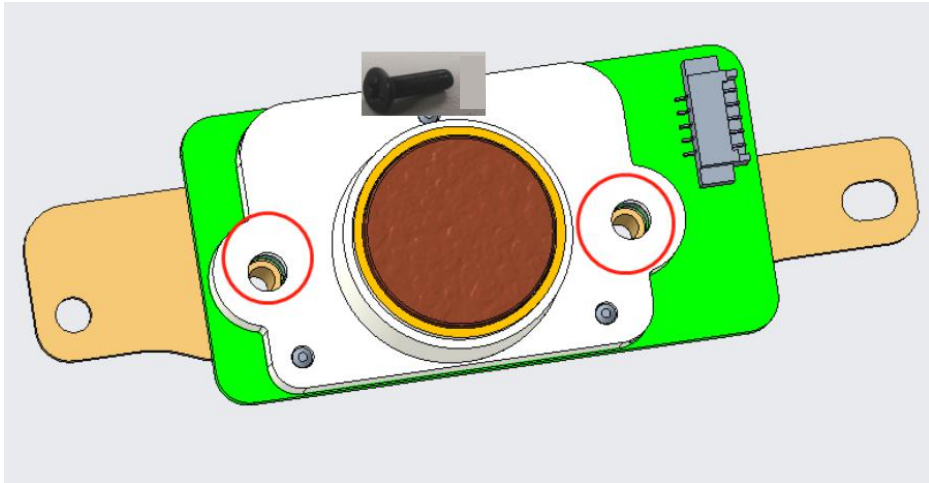


◆ Hall device

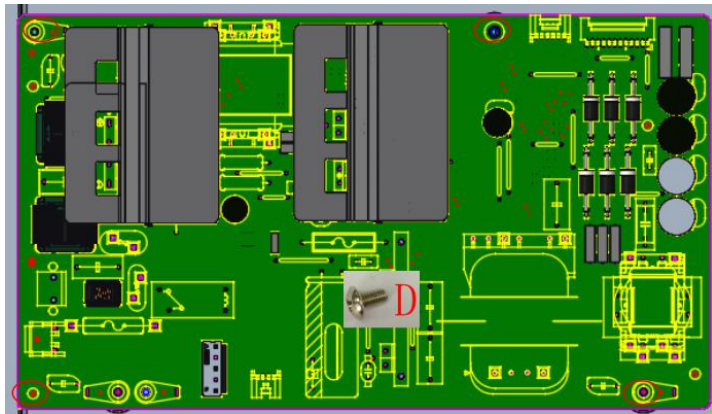


◆ Key Board

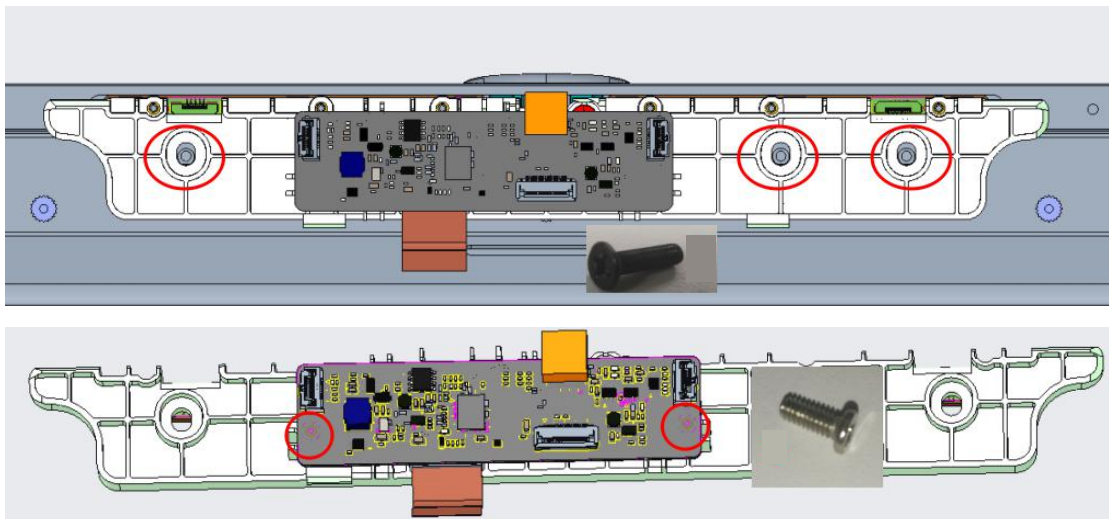


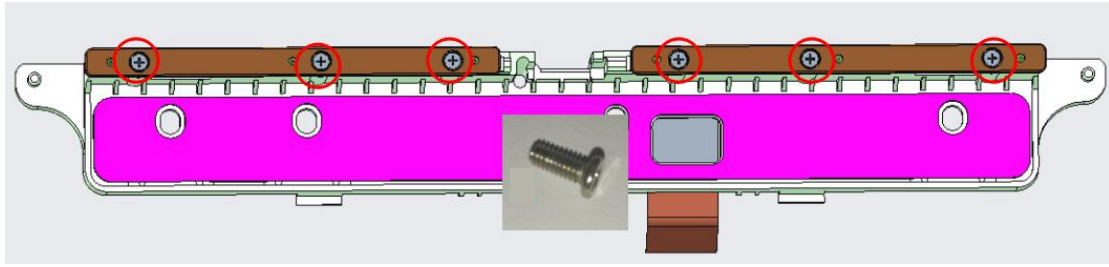


◆ Power board



◆ Camera & MIC Board





2. Maintenance Description

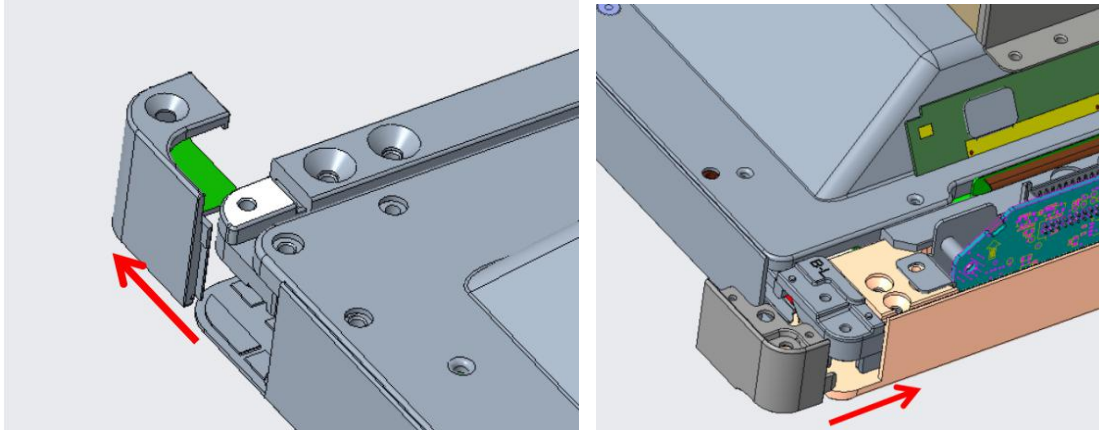
- To replace the circuit boards you need to remove first the rear covers and wires.
- To replace the TV main board, you need to remove the lower terminal block, the side terminal block.
- Cut off the power before performing replacement, so as to prevent any short circuit resulting from contact of wires.
- ⚠ Please note whether the ports of the cables are properly connected in order to prevent the component from being burnt due to inserting in the wrong ports.

IV. Touch Frame Disassembly

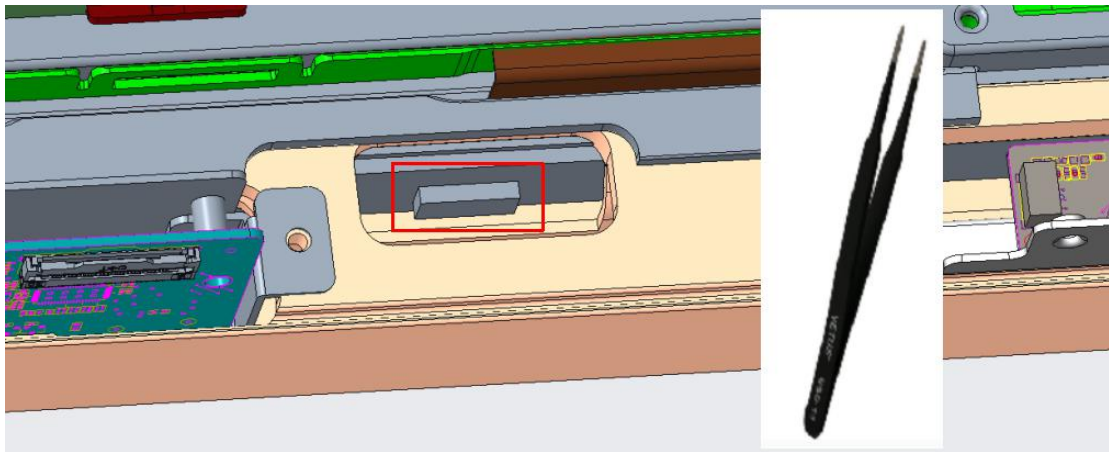
STEP 0: Get machine from the movable bracket and lie it down on the table(Be careful on protection)

STEP 1: Remove small back board(Left/middle/right)

STEP 2: Remove external corner

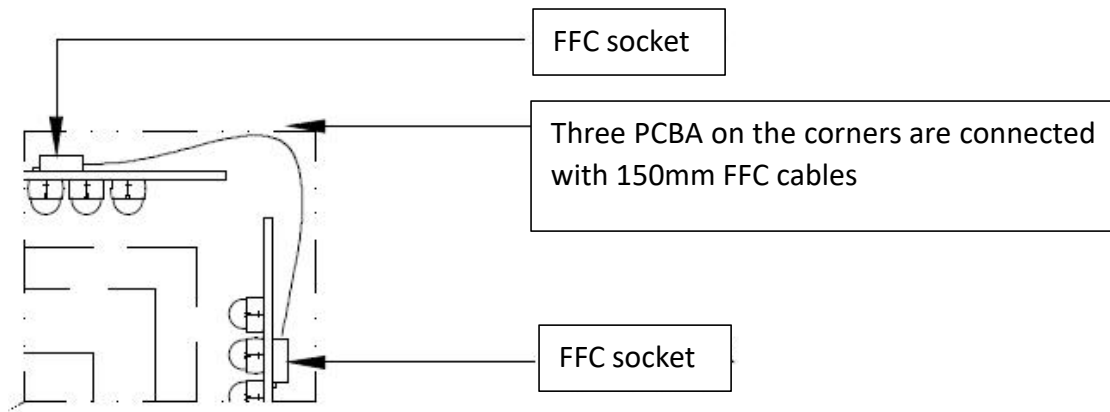


STEP 3: Remove the touch cables between touch frame and Three-in-one main board, use tweezers to press the buckle of touch cable connector and plug out the cable by hands.

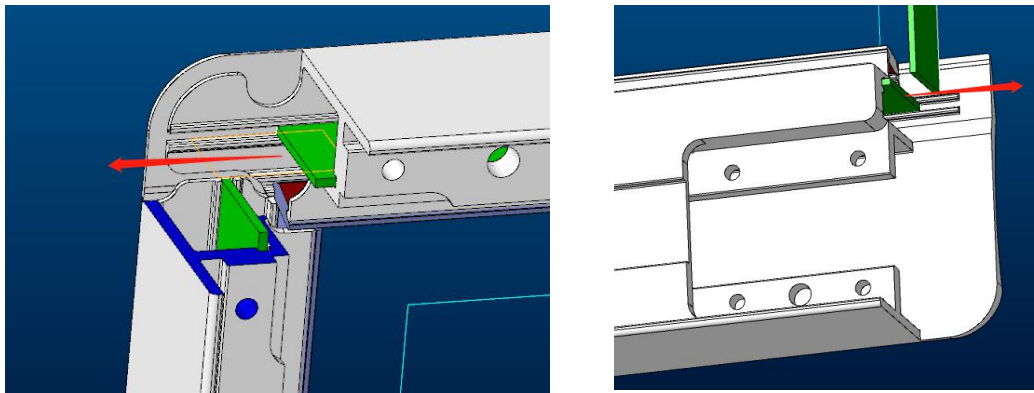


STEP 4: Remove corners

STEP 5: Plug out the FFC cables of below position: Top left、bottom left、bottom right joint point of touch frame



STEP 6: For top and bottom touch frame: Push the touch board from one side and pull out the board by hands from the other side



For left and right touch frame: Push the touch board from bottom side and pull out the board by hands from the top side

STEP 7:Completed

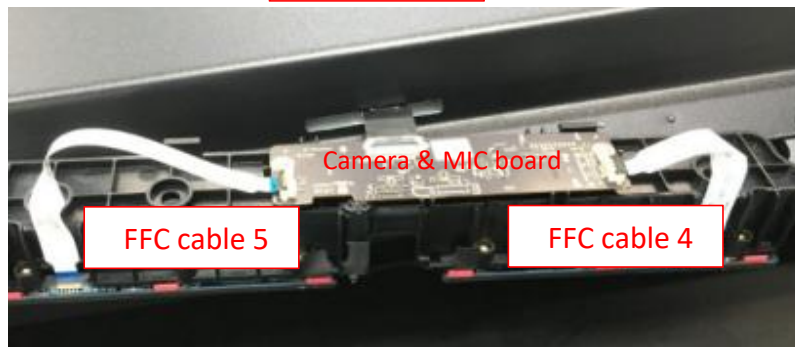
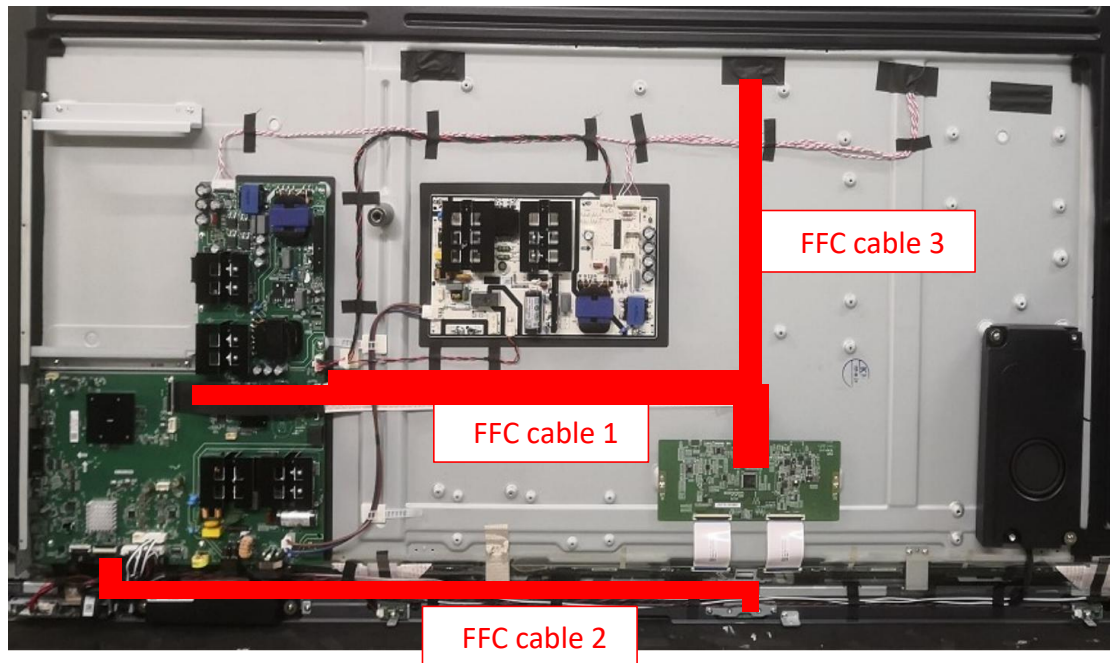
Internal Cables

I. Cable Connection Guide

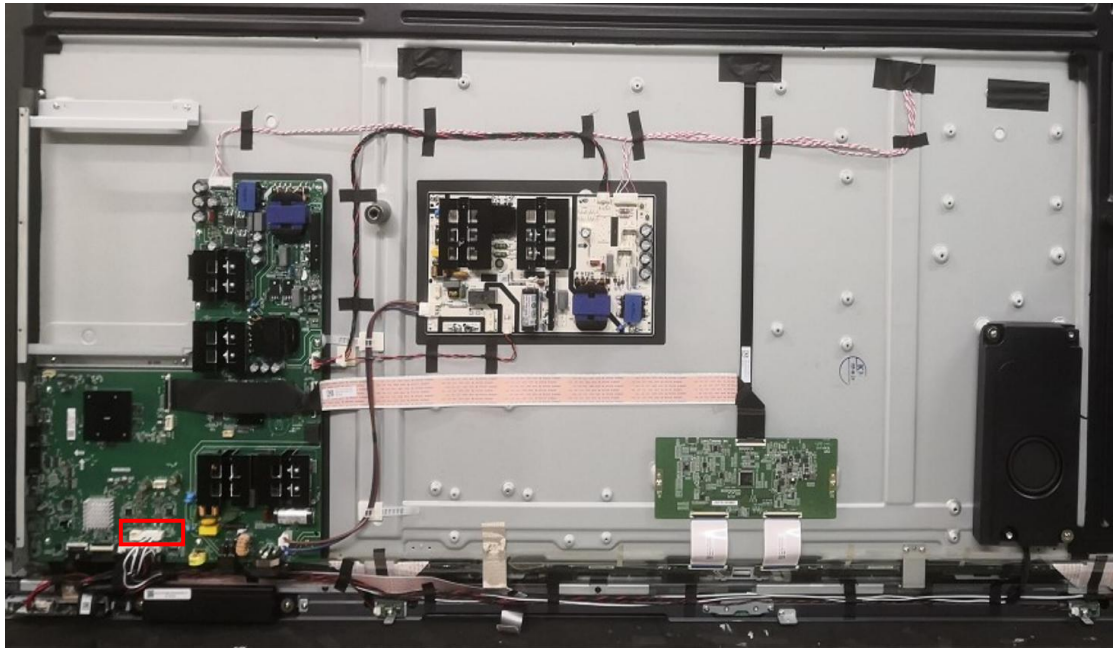
Part Name	Part No	Cable Connection Guide
1.FFC Cable 1	004.050.0004754	Three-in-one main board to TCON board
2.FFC Cable 2	004.050.0050131	Three-in-one main board to WiFi board
3.FFC Cable 3	004.050.0050210	Three-in-one main board to Camera
4.FFC Cable 4	004.050.0004746	Camera to MIC
5.FFC Cable 5	004.050.0004747	Camera to MIC
6.speaker cable	004.050.0050006	Three-in-one main board to speaker
7.USB cable	004.050.0050009	Three-in-one main board to USB board
8.AC cable	004.050.0050226	Three-in-one main board to power board
9.Touch frame FFC cable	004.050.0003249	Three PCBA on the corners are connected with 150mm FFC cables

II. Cable Connection Diagram

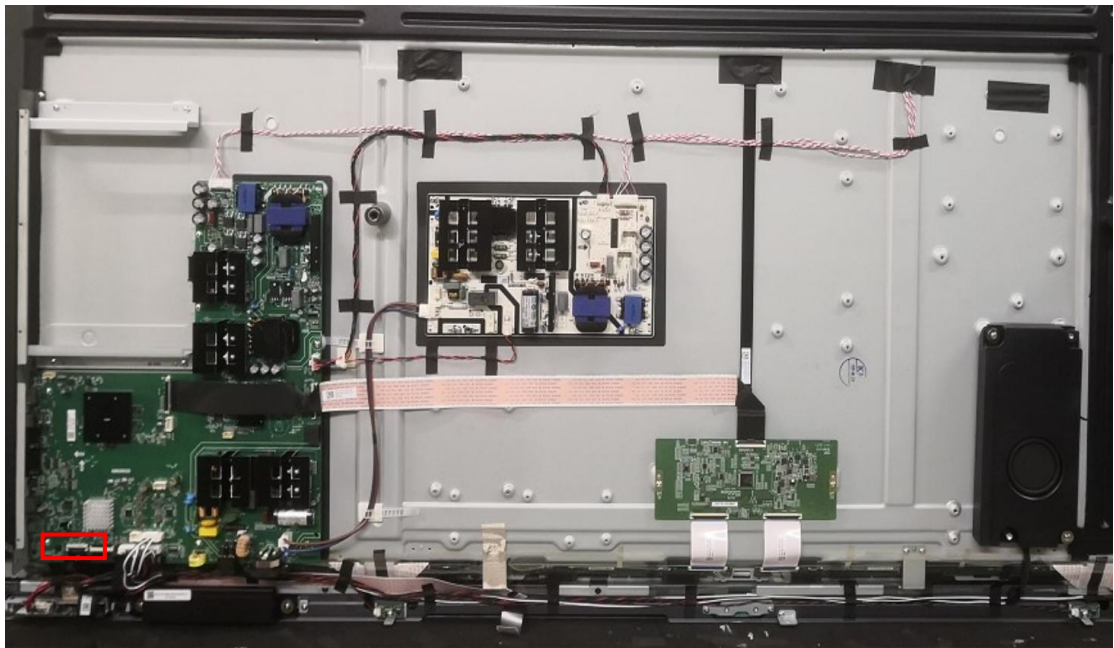
1~5. FFC Cable 1~FFC cable 5



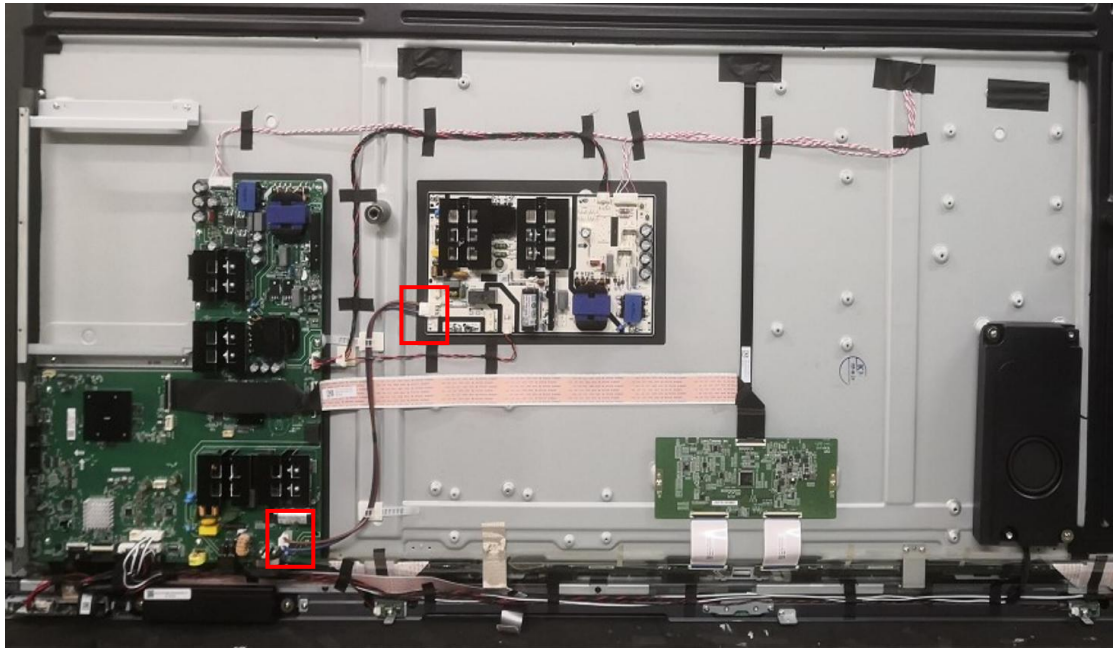
6. Speaker cable



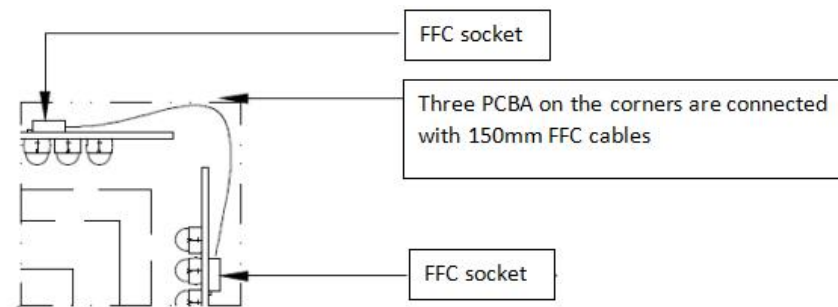
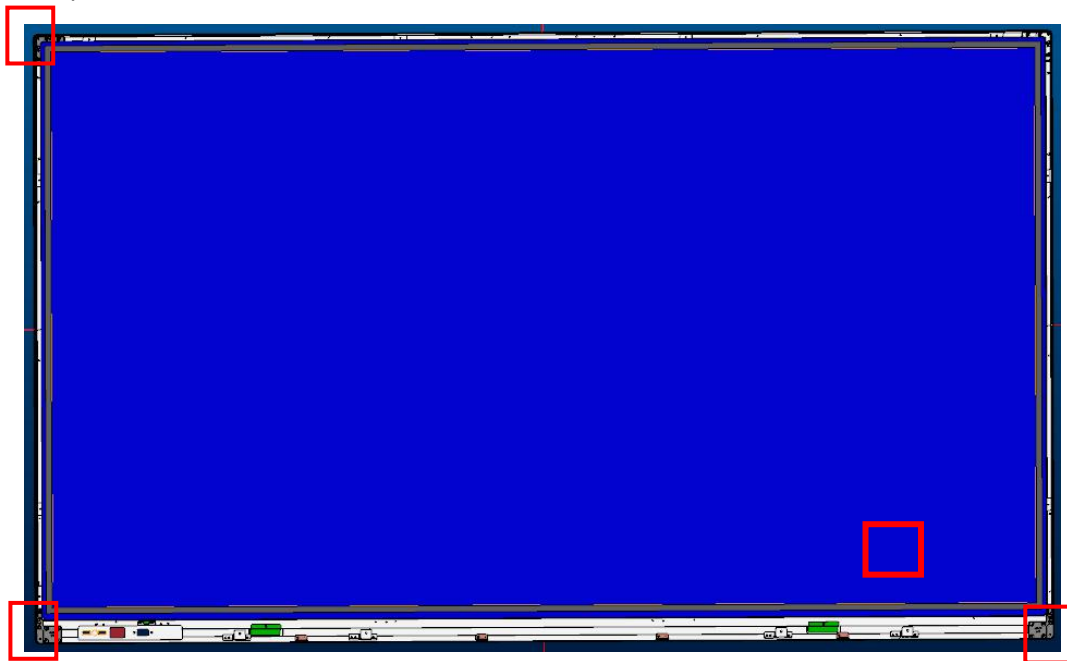
7. USB cable



8. AC cable



9.Touch frame FFC cable(Three PCBA on the corners are connected with 150mm FFC cables)



Key Parts List (For reference only)

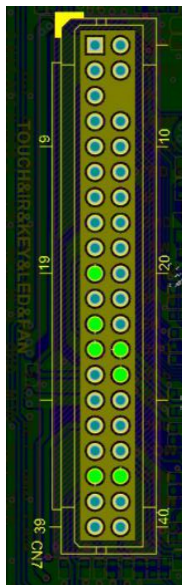
Part No	Component Name	Description	Quantity
004.034.0001922	75" TCON	TCON-UV750QUB-N90	1
004.064.0050115	Touch Frame	X75G03	1
004.057.0050030	Power board	PW.180W1.751E	1
004.057.0050546	Three-in-one Main Board	TP.T972.360WD	1
004.057.0001000	Key board	SRC.KEYUSB.02C	1
004.057.0050149	WIFI board	SRK.PC120P.01A	1
004.057.0001078	Camera board	SRCM.CAM_ISP.01D	1
004.028.0000592	Woofer	6ohm,10W	1
004.057.0050171	MIC board	SRV.Array_MIC.01C	1
004.057.0050547	USB board	SRC.KEYUSB.02C	1
004.057.0000999	Hall device	SRC.HALL.01C	1

Principle of Key Components

I. Three-in one Main Board (TP.T972.360W)

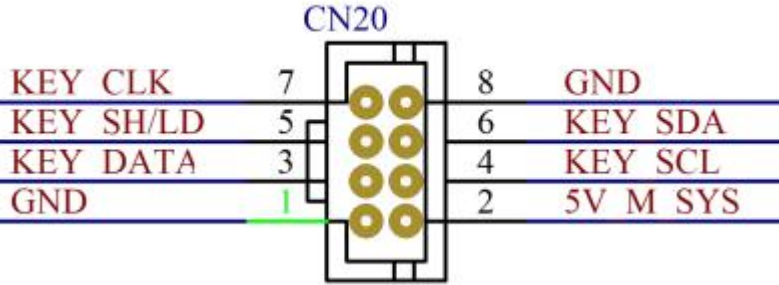
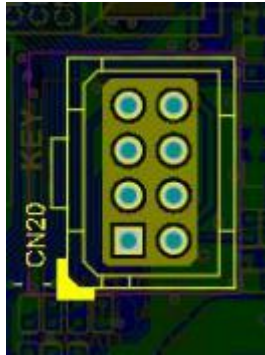


1、CN7: TOUCH&IR&KEY&LED&FAN

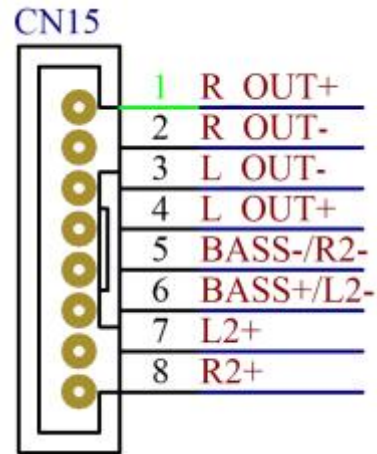
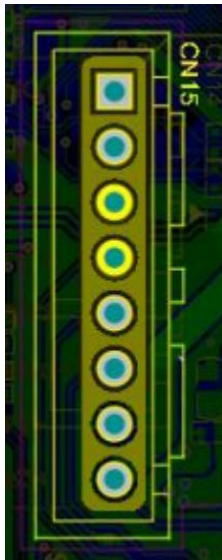


CN7	
FAN G	1
CTL GPIO1	3
HIS SDA	5
GND	7
Light SDA	9
LED R	11
KEYIN	13
GND	15
INF DP	17
5V INFUSB	19
5V INFUSB	21
GND	23
GND	25
5V STB	27
5V M SYS	29
TOUCH5V	31
IR TOU DP	33
GND	35
TC2 HUB2 DP	37
HALL ADC1	39
2	FAN PWM
4	HIS SCL
8	TC2 OCP
10	Light SCL
12	LED G/B
14	IR
16	GND
18	INF DM
20	5V INFUSB
22	5V INFUSB
24	HUB EN
26	GND
28	INF OCP
30	5V M SYS
32	GND
34	IR TOU DM
36	GND
38	TC2 HUB2 DM
40	HALL ADC2

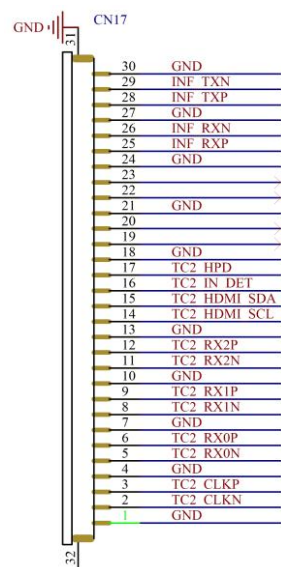
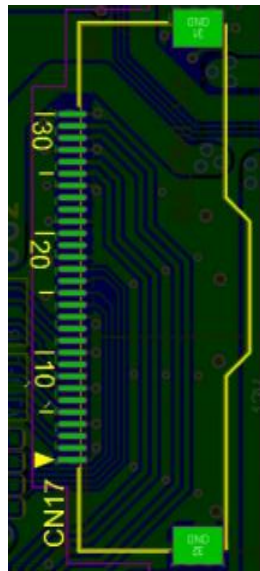
2、CN20: KEY



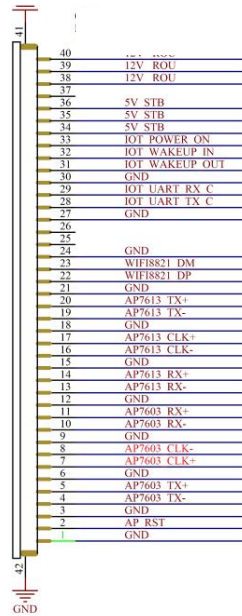
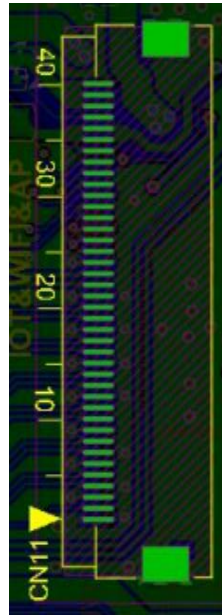
3、CN15: Speaker



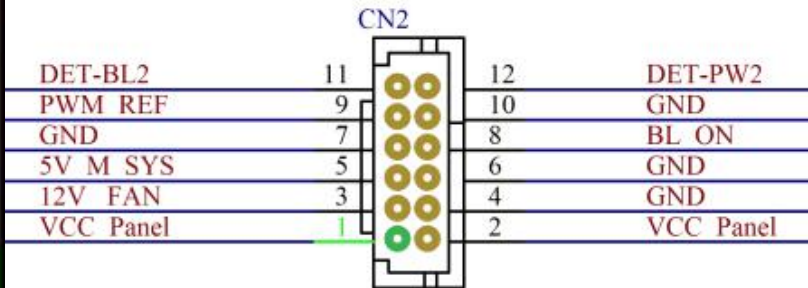
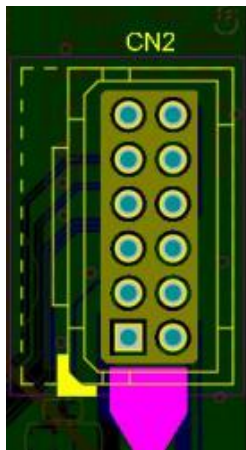
4、CN17: TC2



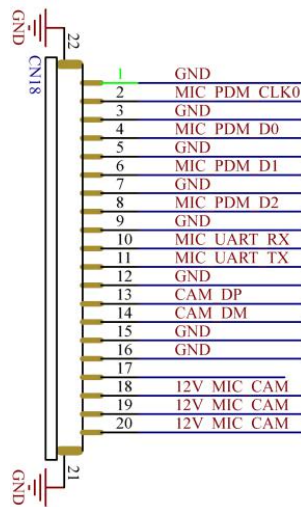
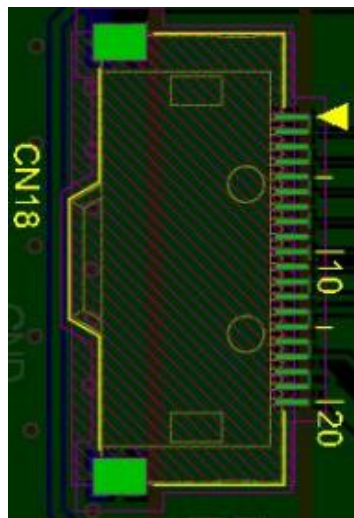
5、CN10: UART



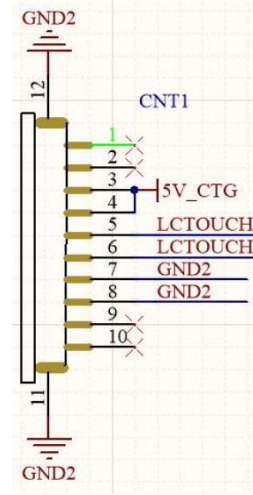
6、CN2: INVERTER&FAN&PANEL



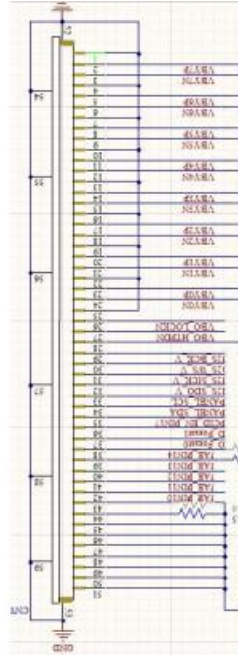
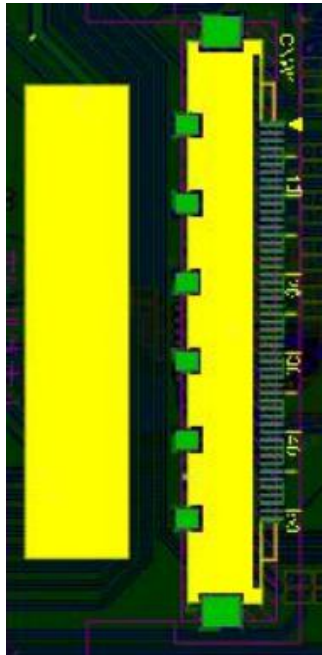
7、CN18: E-CAMMER



8、CNT1: C-TOUCH



9、CNW1: VBYONE

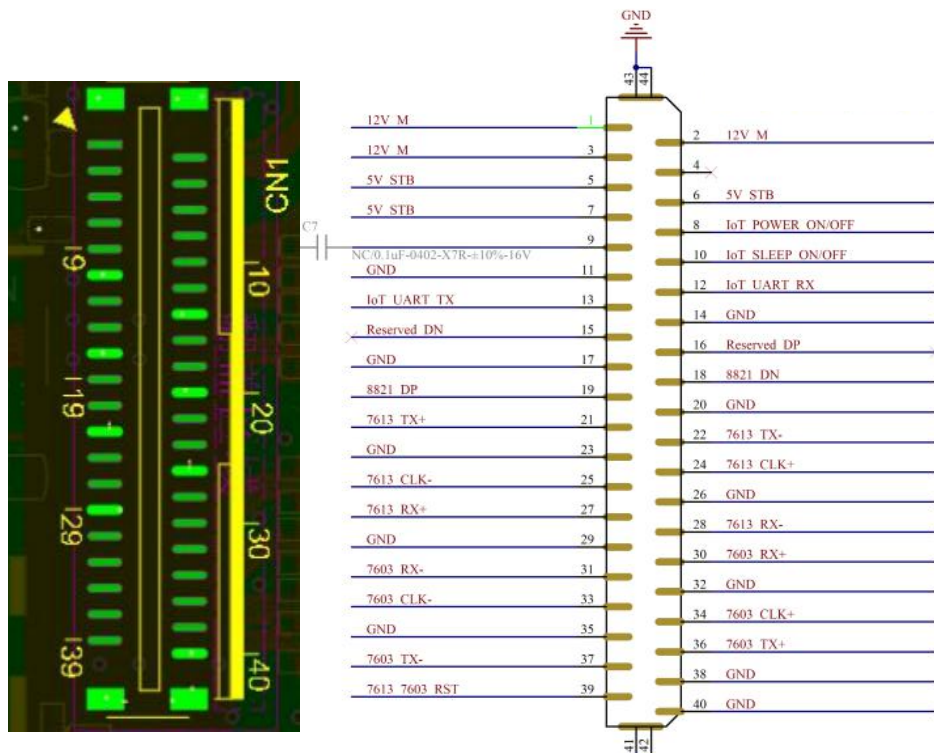


II. Wifi Board (SRV.AP_WiFi_IoT.01)



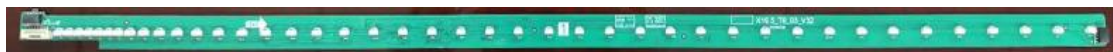
CN1

1. CON1 (AC IN)



III. Touch Frame(X75G06)

1. Top view of touch frame main board



2. Back view of touch frame main board



3. Touch Cable Connector of Touch frame main board (just for reference)



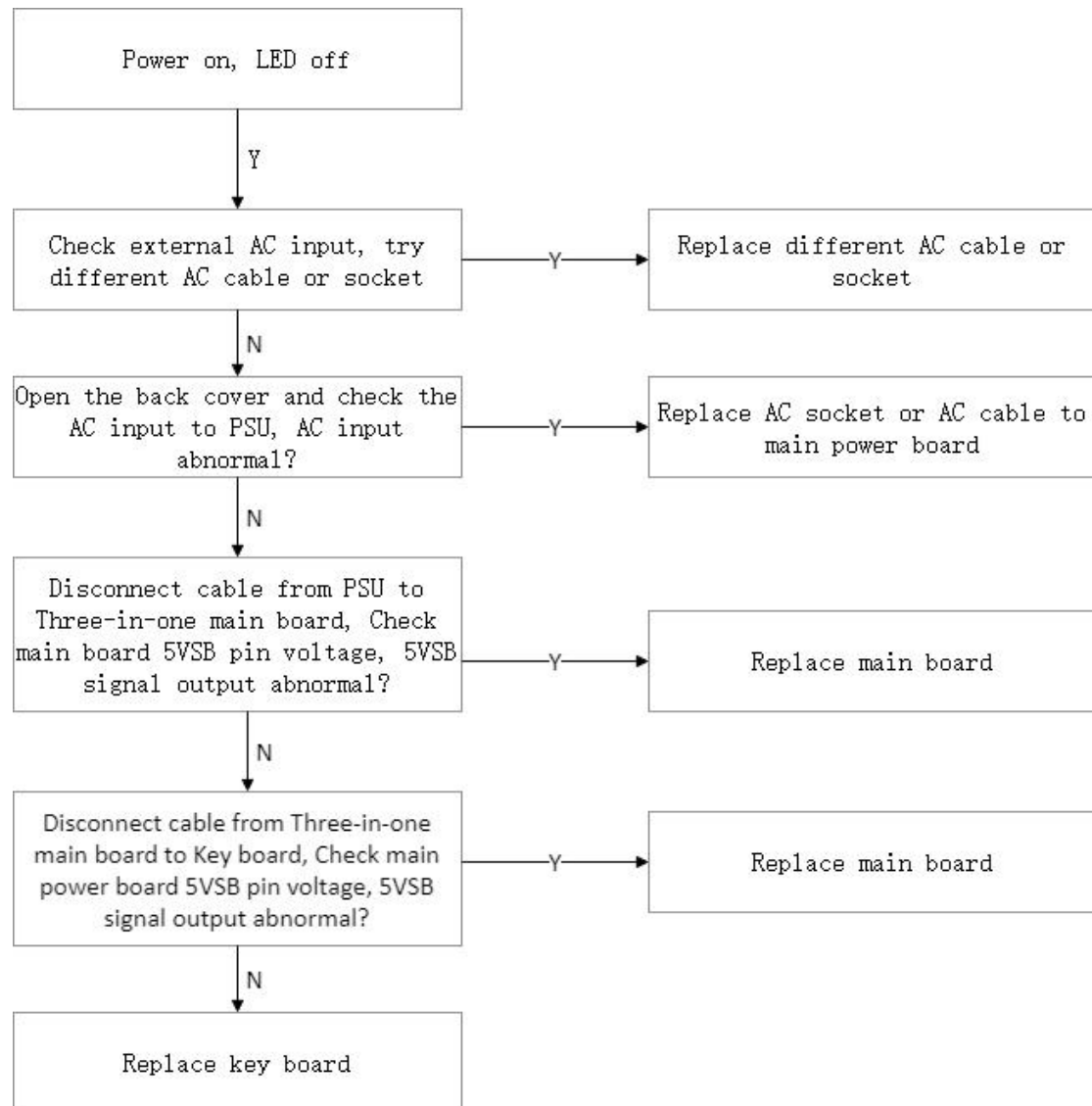
4. Touch Frame Connector Pin Definition

Pin	USB (connect boards)	Description (connect PC module)	
1 PGND		✓	
2 D+		✓	

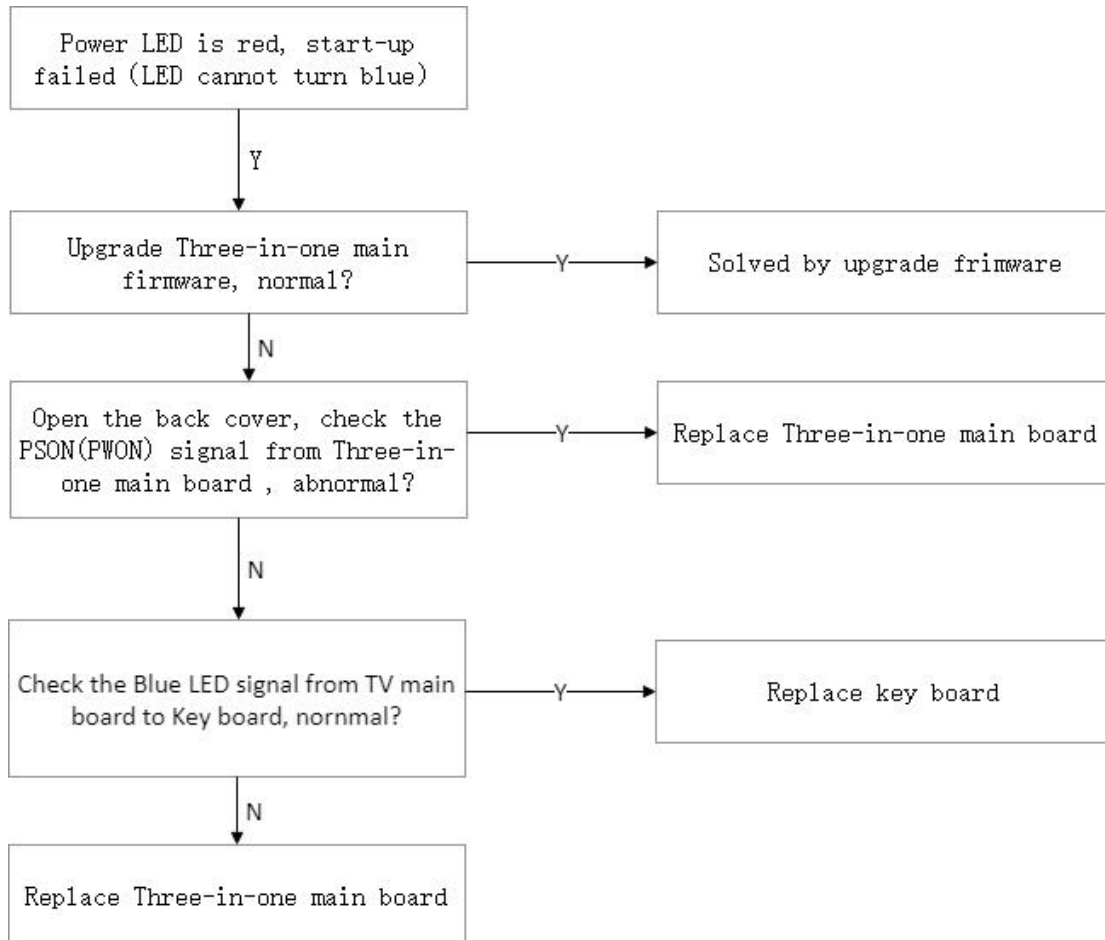
3 D-		√	
4 VCC	√		
5 D-	√		
6 D+	√		
7 GND	√		
8 PGND	√		

Troubleshoot steps

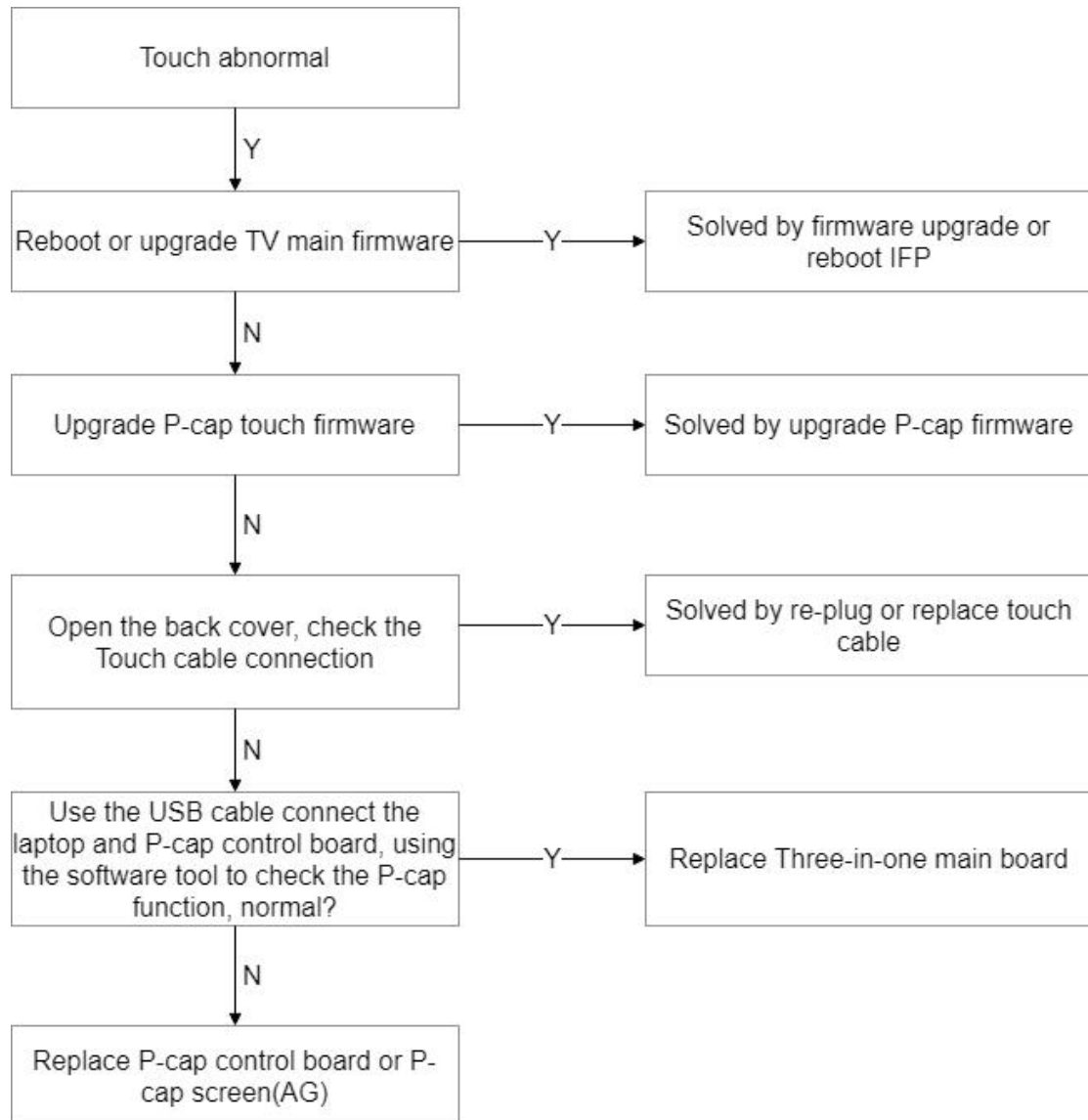
I. LED does not turn red.



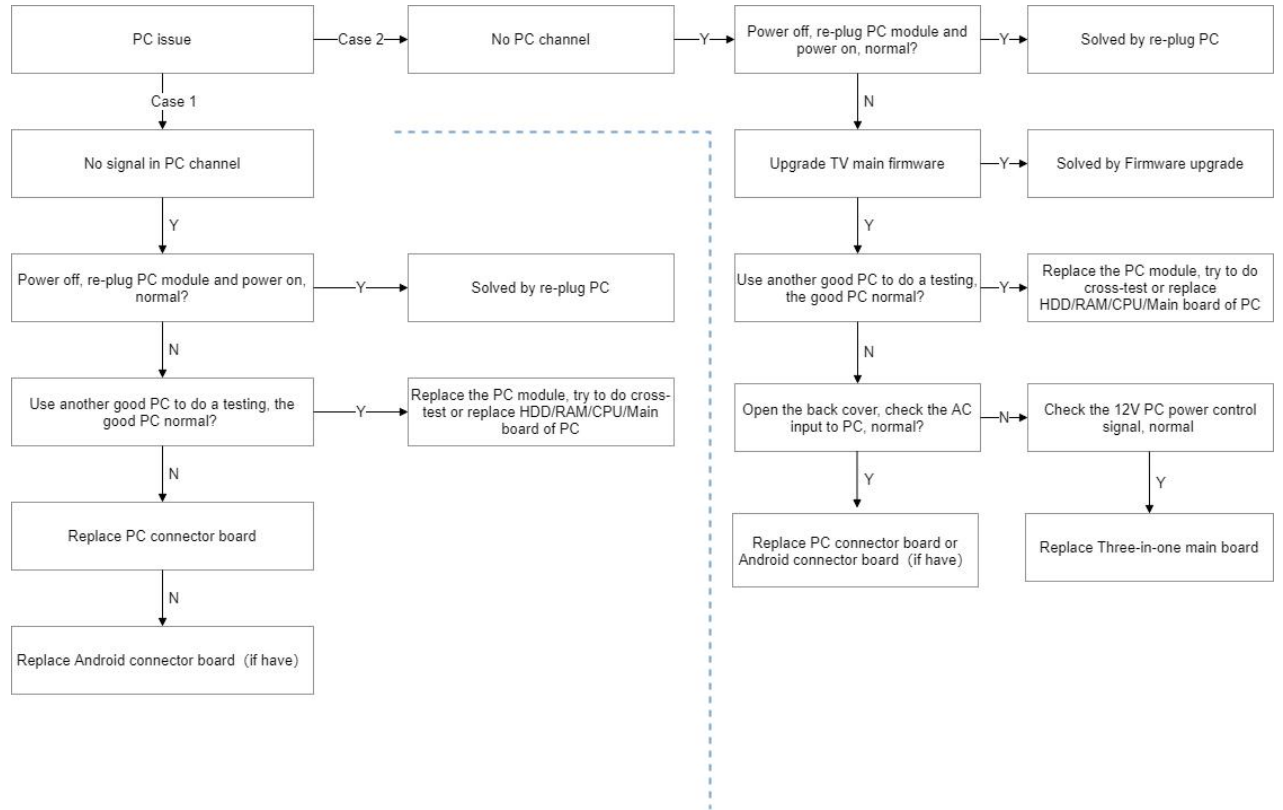
II. LED does not turn blue.



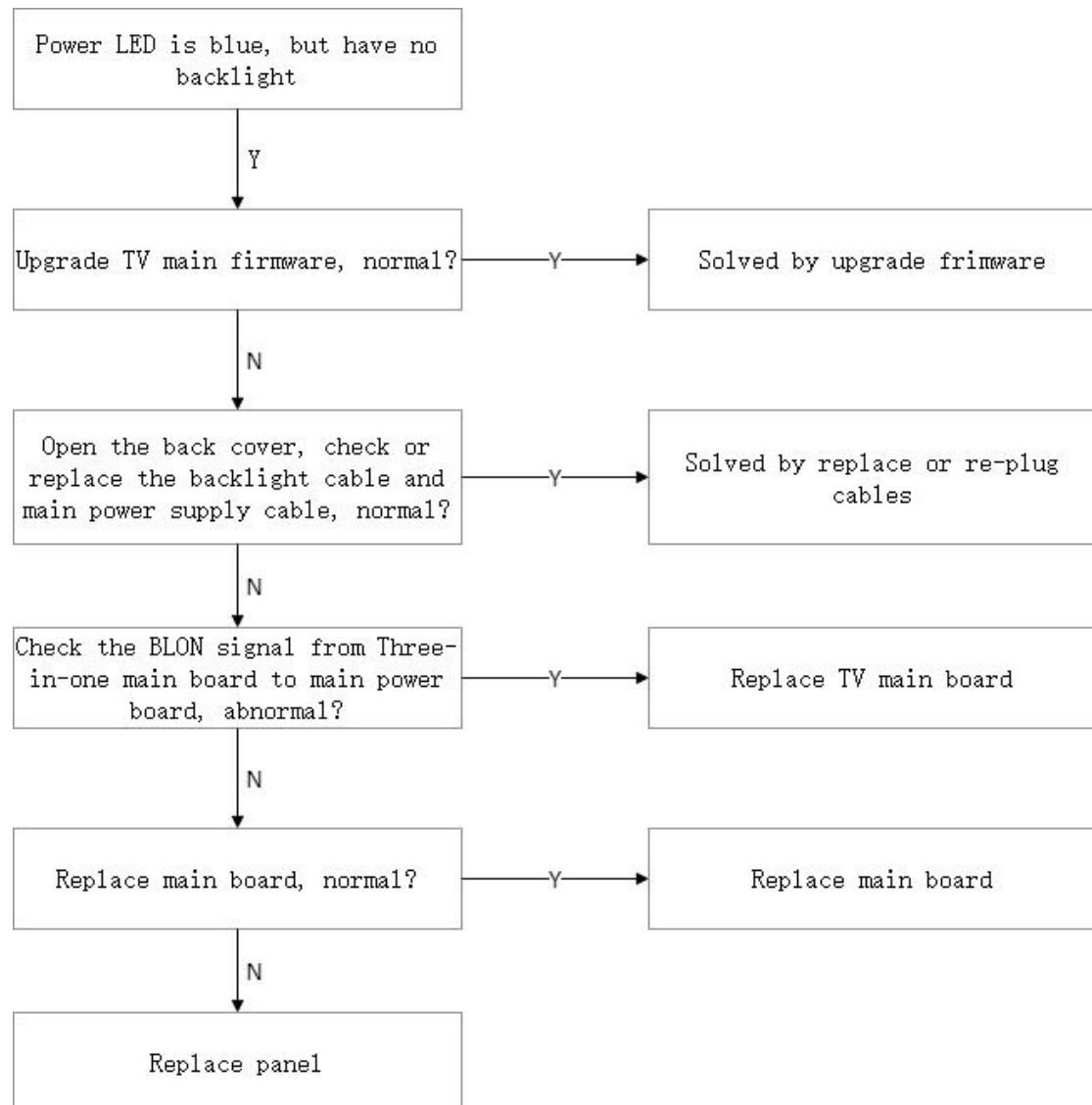
III. Touch issue



IV. PC issue



V. LED turn blue but no backlight



Firmware update procedure

I. Upgrade All (TV & MCU)

1. Debug Menu Upgrade Procedure (recommend)

Tools:

(1) USB disk (Format FAT32) *1PCS.

(2) Remote controller *1PCS.

Procedure:

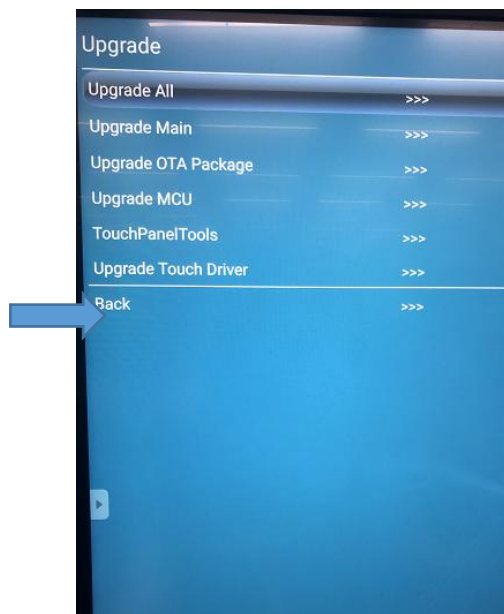
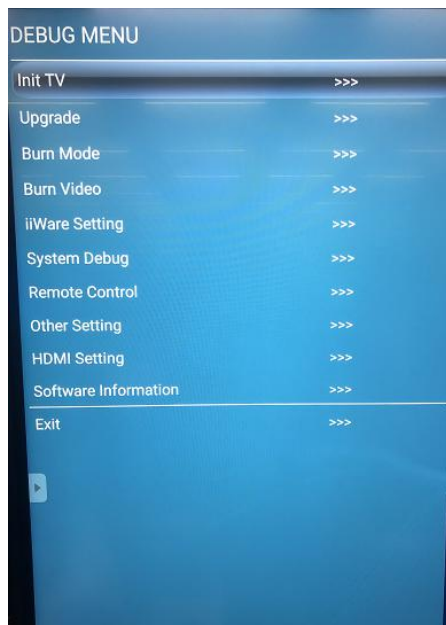
(1) Format the USB disk as FAT32.

(2) Extract upgrade file to the U disk (FAT32) in the root directory. You will get "upgrade_972" folder.(contains allupgrade_v972.bin、MCU.bin)

(3) Insert USB disk into the USB port of the TV board.

(4) Turn on the panel. Press "INPUT 1379" with remote controller, and then the debug menu will pop up. Select

Upgrade-> Upgrade All, press "Enter", and confirm.



(4) The power LED will keep twinkle in red and green during upgrade process. After finished, the panel will reboot and enter Android channel. It will take 4 minutes to complete the upgrade procedure.

Note: If MCU upgrade is failure with tips “Do not power off, please re-upgrade MCU”, press “Back” on the remote controller to exit the process. Upgrade MCU separately by Debug Menu – Upgrade – Upgrade MCU.

2. Power Key Upgrade Procedure

Tools:

USB disk (SanDisk, Format FAT32) *1PCS.

Procedure

(1) Format the U disk as FAT32.

(2) Extract upgrade file to the U disk (FAT32) in the root directory. You will get "upgrade_972" folder. Insert

USB disk into the USB2.0 port of the TV board.

(3) Power on the panel. Press the **POWER** key and hold it until the power LED twinkles in red and blue.

The TV will upgrade first. When finished, the screen will reboot and upgrade MCU automatically. It will take 4 minutes to complete the upgrade procedure.

II. Touch frame Update

1. Internal android

Tools:

(1) USB disk (Format FAT32) *1PCS.

(2) Remote controller *1PCS.

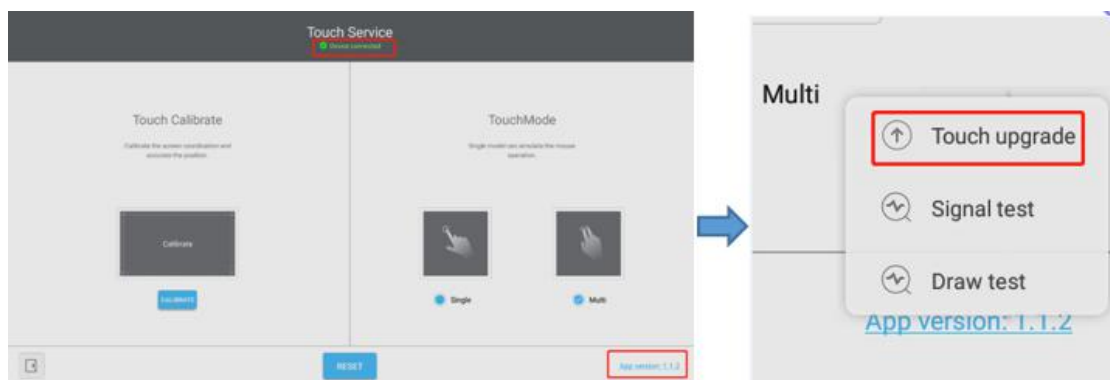
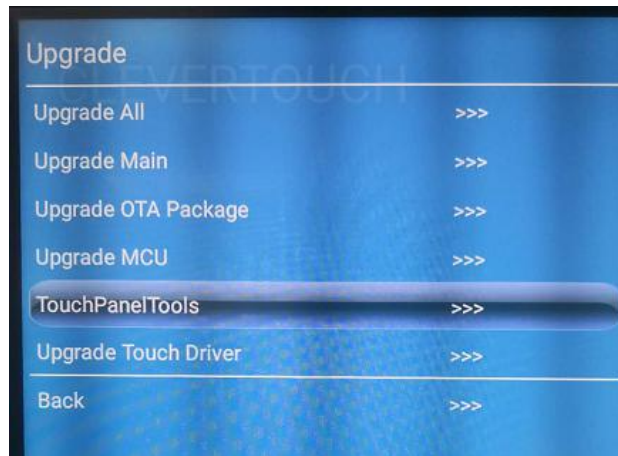
Procedure:

(1) Format the USB disk as FAT32.

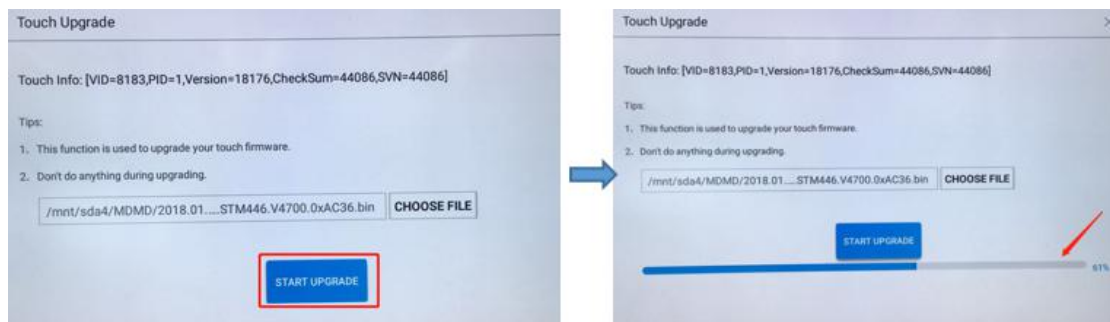
(2) Extract upgrade file to the U disk (FAT32) in the root directory. You will get a “.bin” touch file. Insert USB disk into the USB port of the TV board.

(3) Turn on the panel. Press “INPUT 1379” with remote controller, and then the debug menu will pop up. Select

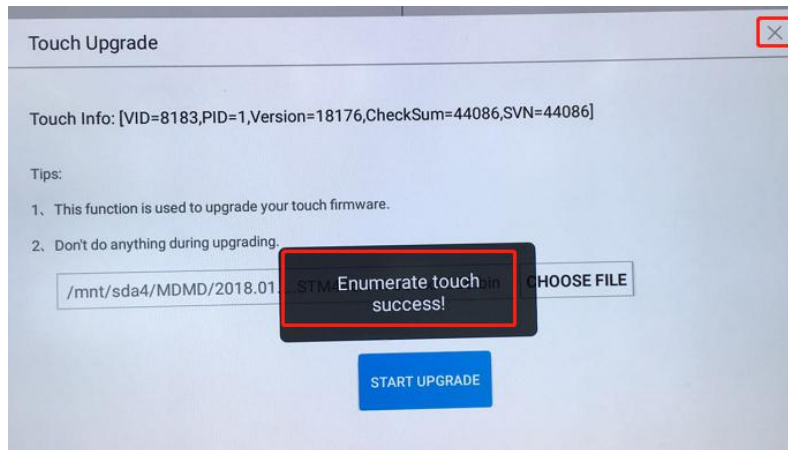
Upgrade-> TouchPanelTools, press “Enter”, long press the “App version”



(4) Select “Touch upgrade” and get into the upgrade interface, choose the touch file(bin file) from the USB disk, press “START UPGRADE”



(5) After upgrade finished, press the “X” button in the right corner and exit.



Note:

When running the “TouchPanelTools” application, the Touch Service should be showing “Device connected”. If not, please reboot and upgrade again.

